

NOTES

ALL LEVELS ARE IN METRES RELATED TO AN ASSUMED DATUM LOCATED ON THE MANHOLE IN EAST ROAD AS SHOWN. (value 100.00m).

THE COORDINATE GRID IS BASED ON ASSUMED VALUES.

THIS DRAWING HAS BEEN PRODUCED WITH A PLOT SCALE ACCURACY OF 1:100.

TREE SPECIES SHOULD BE CONFIRMED BY TREE SPECIALIST IF CRITICAL.

OVERHEAD CABLES ARE INDICATED USING REMOTE SURVEY METHODS AND ARE SUBJECT TO SEASONAL VARIATION, AND SHOULD BE TREATED AS APPROXIMATE.

KEY (LAND)

- mh - man hole
- ic - inspection cover
- cl - cover level
- il - invert level
- ep - electric pole
- dp - depth
- top - top of cap
- tot - top of tank
- tp - top of pipe
- uti - unable to lift
- wfc - water filled chamber
- mkr - marker
- fh - fire hydrant
- g - gully
- sv - stop valve
- c/b - cable television
- wm - water meter
- bt - telecom
- p & r fence - post & rail fence
- ret wall - retaining wall
- f - fence
- re - rodding eye
- er - earthing rod
- elec - electric
- q/run - gully run
- d/chan - drainage channel
- sp - soil pipe
- rwp - rain water pipe
- wp - waste pipe
- svp - soil vent pipe
- vp - vent pipe
- rs - road sign
- lp - lamp post
- tp - telecom pole
- ep - electric pole
- tl - traffic light
- sl - spot light
- c/box - control box
- ball - bollard
- al - aluminium
- cr - cable riser
- ht - height
- u/s - underside
- f/bed - flower bed
- c/b fence - closeboard fence
- sec fence - security fence
- ret wall - retaining wall
- p & r fence - post & rail fence
- s/birch - silver birch
- h/chestnut - horse chestnut
- ly/thorn - hawthorn
- con - conifer
- sap - sapling
- TBM - temporary bench mark
- OSBM - ordnance survey bench mark

SERVICES NOTES

TANK SCHEDULE				
TANK	CAPACITY	GRADE	TO PUMPS	
1	52900	LRP	3/4	5/6 11/12 13/14
2	52900	UN	5/6	11/12 13/14
3	35300	D	1/2	7/8 9/10 15/16
4	35300	SUN	3/4	5/6 11/12 13/14
5	26400	UN	3/4	

ELECTRO-MAGNETIC TECHNIQUES HAVE BEEN USED IN THE LOCATION OF UNDERGROUND SERVICES. THE RESULTS ARE NOT INFALLIBLE AND TRIAL EXCAVATIONS SHOULD BE CARRIED OUT TO CONFIRM SERVICE IDENTIFICATION, POSITIONS AND PARTICULARLY DEPTHS, WHERE THESE ARE CRITICAL. ALTHOUGH ALL REASONABLE EFFORT HAS BEEN MADE IN SEARCHING AVAILABLE RECORD DRAWINGS, THE COMPLETENESS OF THE UNDERGROUND SERVICES INFORMATION CANNOT BE GUARANTEED.

WHERE SERVICES ARE NON-METALLIC POSITIONS ARE TAKEN FROM RECORDS, TRENCH SCARS & SURFACE DETAIL.

WHERE QUOTED DEPTH ESTIMATIONS ARE GENERALLY TO THE CENTRE OF THE SERVICE, DEPTHS TO GRAVITY SEWERS AND DRAINS ARE GENERALLY TO INVERT LEVELS UNLESS OTHERWISE STATED.

PIPE SIZES WHICH CANNOT BE OBTAINED BY VISUAL SURVEY ARE TAKEN FROM RECORD DRAWINGS OR MARKER PLATES WHERE AVAILABLE.

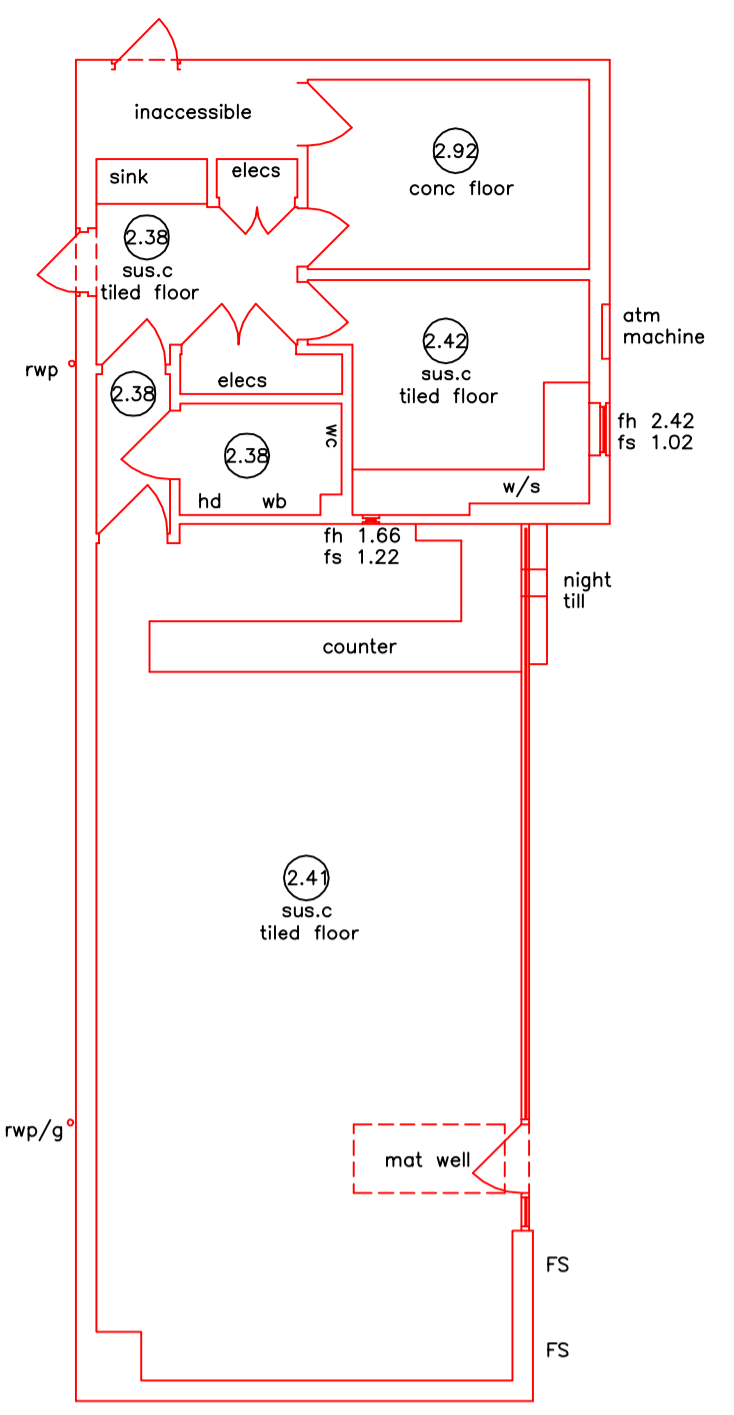
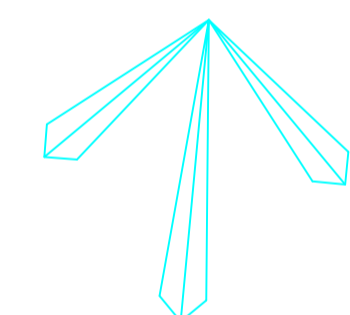
ABBREVIATIONS

- AR ASSUMED ROUTE
- BTIC BRITISH TELECOM CHAMBER
- CP CABLE PIT
- CL COVER LEVEL
- CR CABLE RISER
- EP ELECTRICITY POLE
- EoC EDGE OF CANOPY
- EOT END OF TRACE
- FH FIRE HYDRANT
- G GULLY
- GV GAS VALVE
- IC INSPECTION CHAMBER
- IL INVERT LEVEL
- LP LAMP POST
- MH MANHOLE
- NL NOT LOCATED
- PR PIPE RISER
- RE RODDING EYE
- RWP RAINWATER PIPE
- SV STOP VALVE
- TCB TELEPHONE CALL BOX
- TR TAKEN FROM RECORDS
- TP TELEGRAPH POLE
- UTL UNABLE TO LIFT
- UTS UNABLE TO SURVEY
- WL WATER LEVEL
- VP VENT PIPE
- VR VAPOUR RECOVERY
- WM WATER METER
- WO WASH OUT VALVE

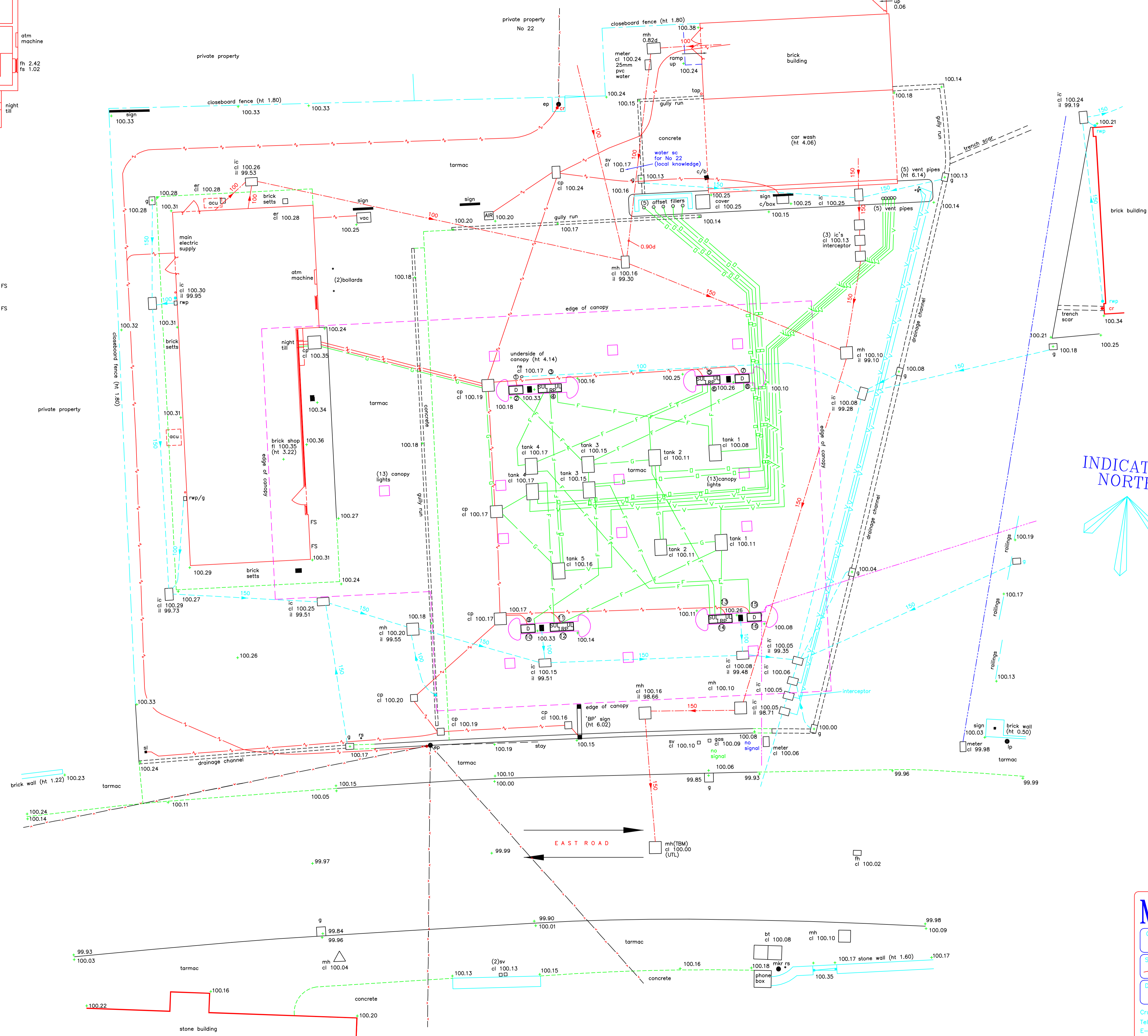
KEY

- E— E— ELECTRIC CABLE
- T— T— TELECOM CABLE
- W— W— WATER PIPE
- G— G— GAS PIPE
- F— F— FUEL PIPE
- V— V— VENT PIPE
- O— O— OFFSET FILL PIPE
- G— G— GAUGE LINE
- VR— VR— VAPOUR RECOVERY
- F— F— FOUL DRAINAGE
- S— S— SURFACE DRAINAGE
- C— C— COMBINED DRAINAGE
- P— P— PUMPING MAIN
- TV— TV— CABLE TELEVISION
- A— A— COMPRESSED AIR
- H— H— HEATING PIPE
- D— D— DUCTING
- U— U— UNIDENTIFIED
- EOT— EOT— END OF TRACE

INDICATIVE NORTH



MAIN SHOP PLAN



© Copyright Midland Survey Ltd. Reproduction of this information prohibited without written authorisation from Midland Survey Ltd.

MIDLAND SURVEY LTD

Client: _____

Site Address: _____

Date: _____

Scale: _____

Dwg No: _____

Checked: _____

Surveyor: _____

EXAMPLE

Cromwell House, Westfield Road, Southam, Warwickshire, CV47 0JH
 Tel: 01926 810811 Fax 01926 810812
 E-Mail: mail@midlandsurvey.co.uk
 www.midlandsurvey.co.uk