

NOTES

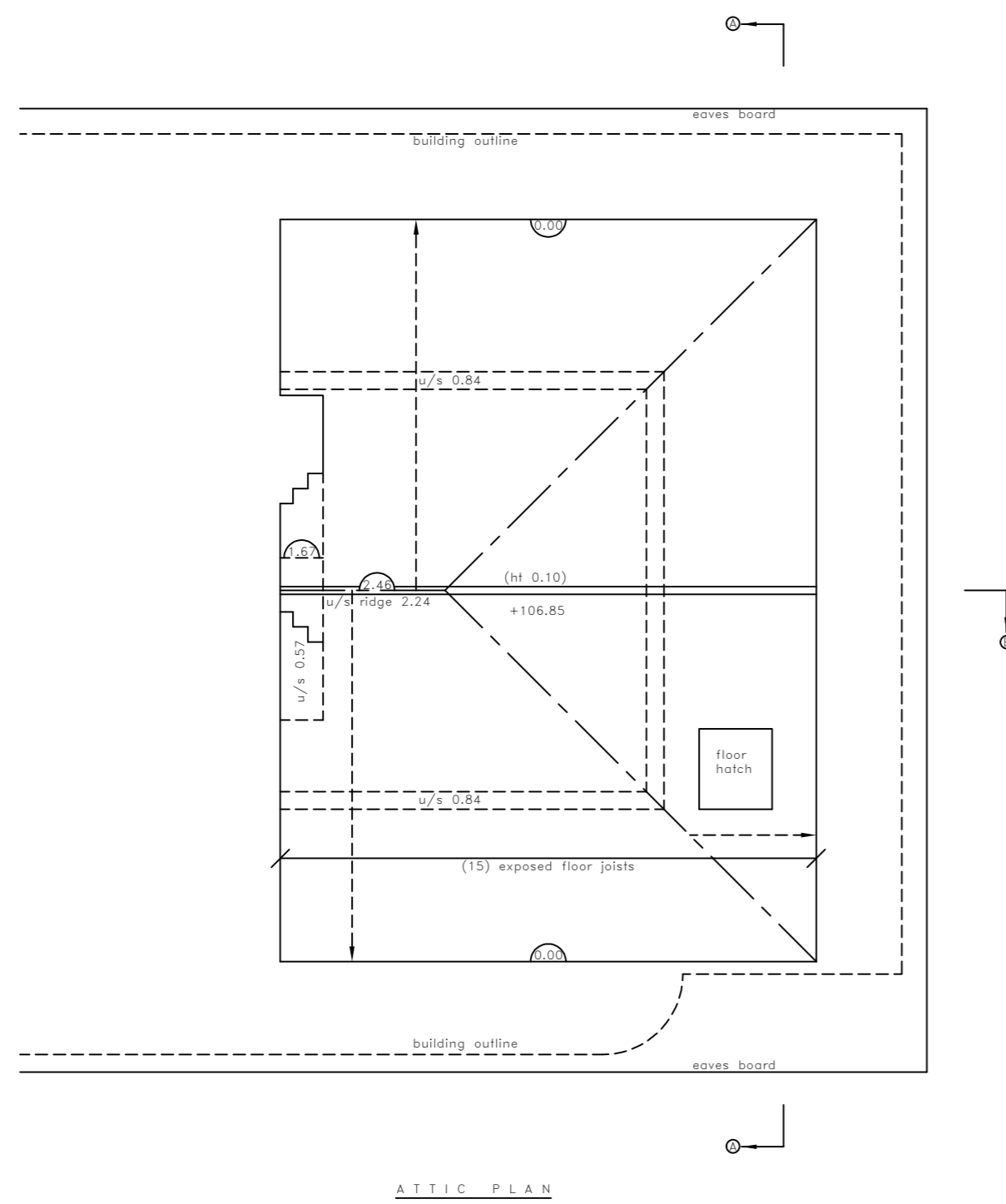
GENERAL NOTES :-
 ALL LEVELS ARE IN METRES RELATED TO AN ASSUMED DATUM LOCATED ON INSPECTION COVER AS SHOWN ON DRAWING 24885/1. (+value 100.00m).
 THIS DRAWING HAS BEEN PRODUCED WITH A PLOT SCALE ACCURACY OF 1:50

BUILDING SURVEY KEY :-

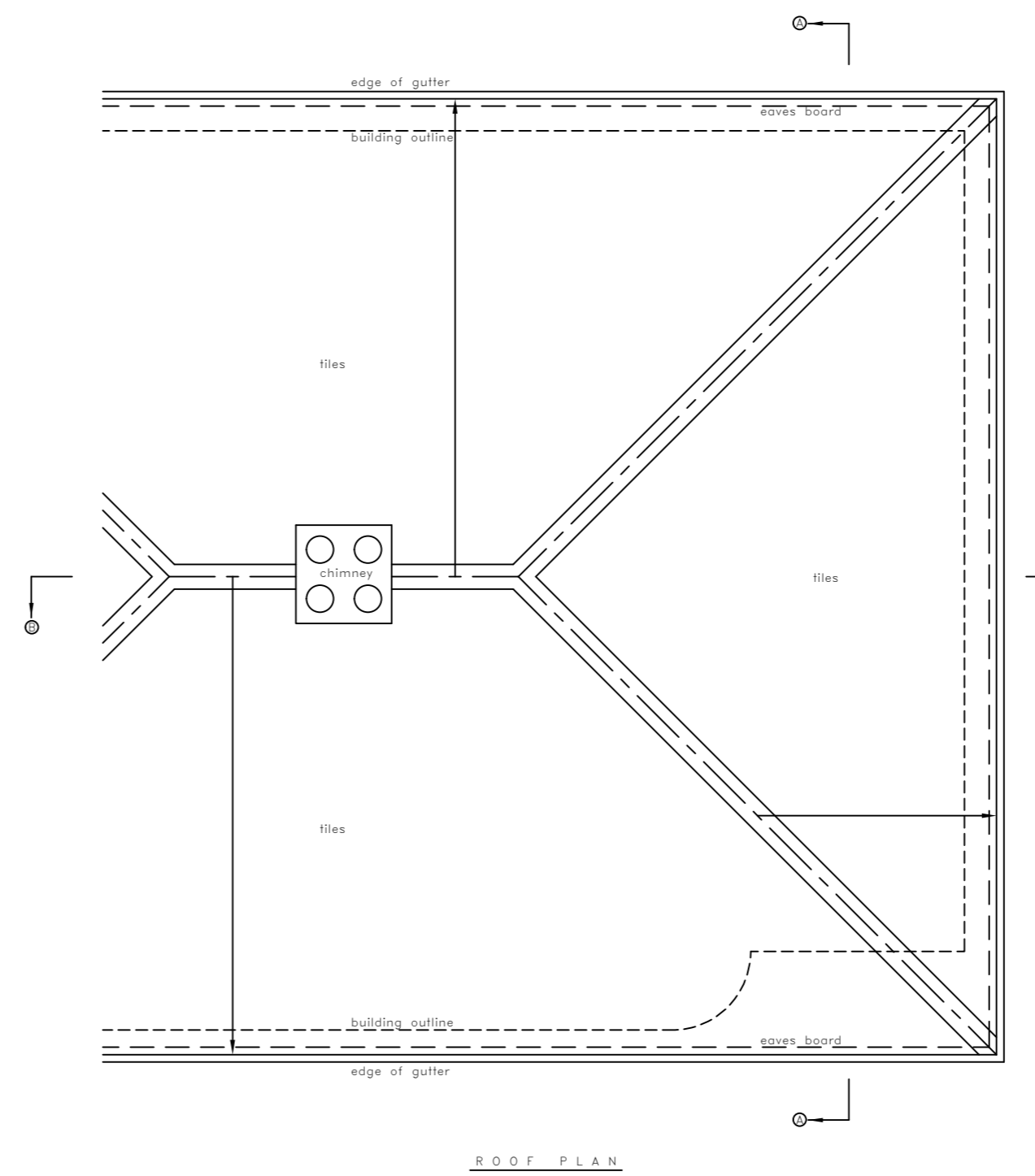
- | | |
|---------------------------|-----------------------------------|
| ⊘ - room height | hwf - hot water tank |
| ⊥ - floor boards | lc - inspection cover |
| ⌀ - pipe diameter | ll - insert level |
| a/b - air brick | mb - manhole cover |
| ah - arch height | OSBM - Ordnance Survey bench mark |
| bd - back drop | q/tiles - quarry tiles |
| bk - brick | rad - radiator |
| conc - concrete | ri - roof light |
| cr - cottle riser | rwf - rain water pipe |
| db - fuse box | sfc - soil filled chamber |
| dh - door height | sh - floor to sill height |
| dp - depth | sp - arch springing point height |
| e/mtr - electricity metre | sp - soil pipe |
| elec - electricity | susc - suspended ceiling |
| f/p - fire place | svp - soil vent pipe |
| fh - floor to head height | z/call - hatched level roll |
| fl - floor level | IBM - temporary bench mark |
| fs - floor to sill height | ll - threshold level |
| g/mtr - gas metre | toc - top of cap |
| gs - gas riser | top - top of pipe |
| hd - hand dryer | uf/s - underside height |
| hr - heater | utl - unable to lift |
| | vp - vent pipe |
| | wf - water fountain |
| | wfc - water filled chamber |
| | wp - waste pipe |

SERVICES KEY :-

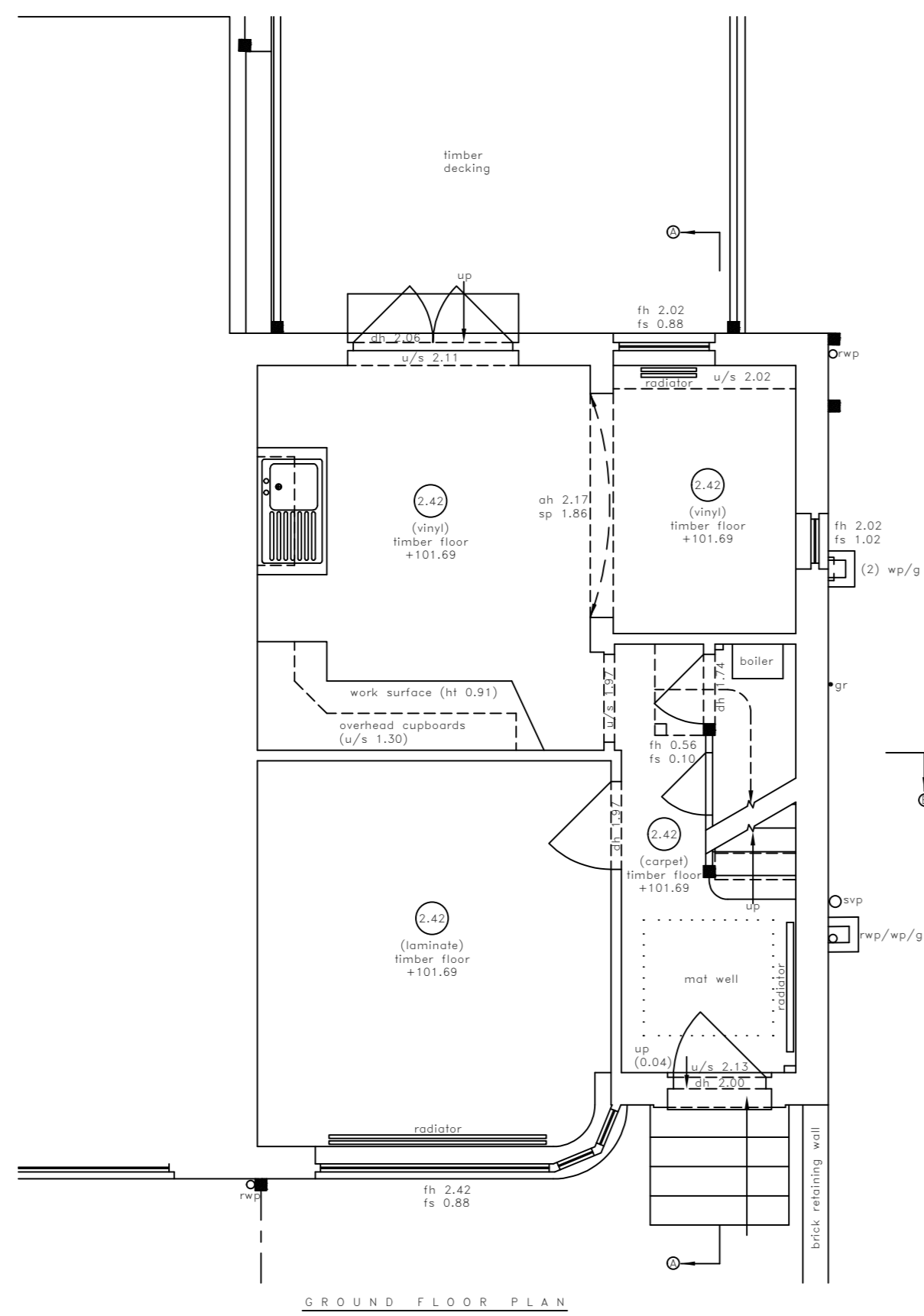
- | | | | |
|---|-------------------------------|-----|--------------------------|
| ⊗ | strip light | AK | alarm keypad |
| ⊗ | light | IC | intercom |
| ⊗ | wall light | ACP | alarm control panel |
| ⊗ | emergency light | SPK | speaker |
| ⊗ | spot light | PRC | projector |
| ⊗ | pull cord | CCV | closed circuit tv |
| ⊗ | ventractor | S | sensor |
| ⊗ | switch | NP | network point |
| ⊗ | light switch | NC | network aerial |
| ⊗ | fused switch | CA | coaxial aerial |
| ⊗ | isolator switch | SD | smoke detector |
| ⊗ | cooker switch | FD | heat detector |
| ⊗ | fuse | FA | fire alarm siren |
| ⊗ | blank socket | FB | fire breakglass |
| ⊗ | single socket | FS | fire sprinkler |
| ⊗ | double socket | FB | fire blanket |
| ⊗ | ceiling socket/fuse/switch | WF | water fire extinguisher |
| ⊗ | thermostat | CF | co2 fire extinguisher |
| ⊗ | card access point (wipe card) | PF | powder fire extinguisher |
| ⊗ | emergency door release | FE | fire extinguisher |
| | | FAP | fire alarm control panel |



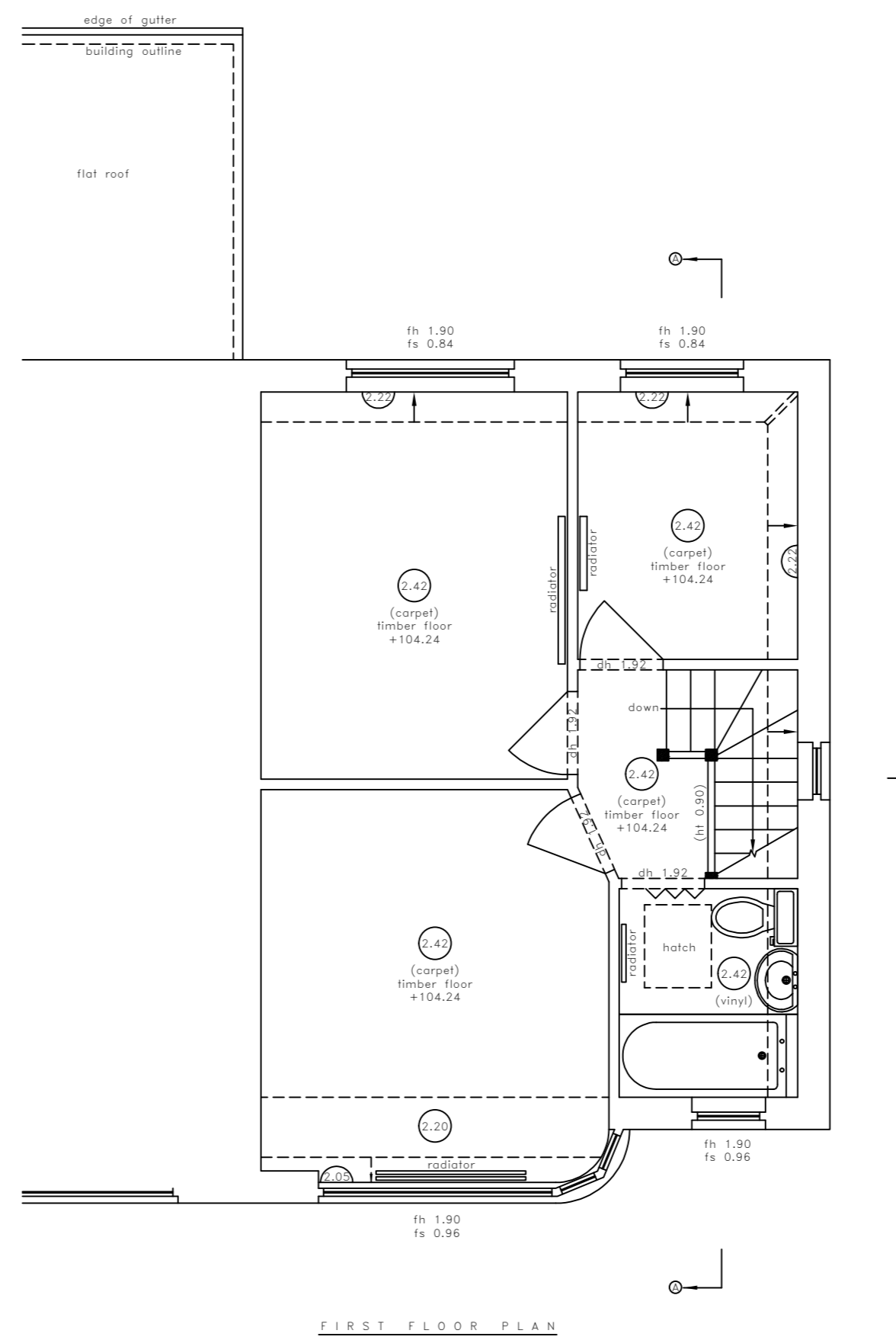
ATTIC PLAN



ROOF PLAN



GROUND FLOOR PLAN



FIRST FLOOR PLAN



MIDLAND SURVEY LTD

HEAD OFFICE
 Cromwell House, Westfield Road, Southam, Warwickshire, CV47 0JH.
 Tel: 01926 810811 Fax: 01926 810812
 E-Mail: mail@midlandsurvey.co.uk
 www.midlandsurvey.co.uk

Client: EXAMPLE - FULL BUILDING SURVEY - SEMI-DETACHED - OXFORD

Project:

Title: GROUND AND FIRST FLOOR PLAN, ATTIC AND ROOF PLAN

Date: _____ Revisions: _____

Scale: 1:500A1

Dwg No: _____ /2

Surveyor: _____

Checked: _____

TOPOGRAPHICAL (LAND) SURVEYORS / UTILITY SURVEYORS
 BUILDING MEASUREMENT SURVEYORS / 3D LASER SCANNING



NOTES

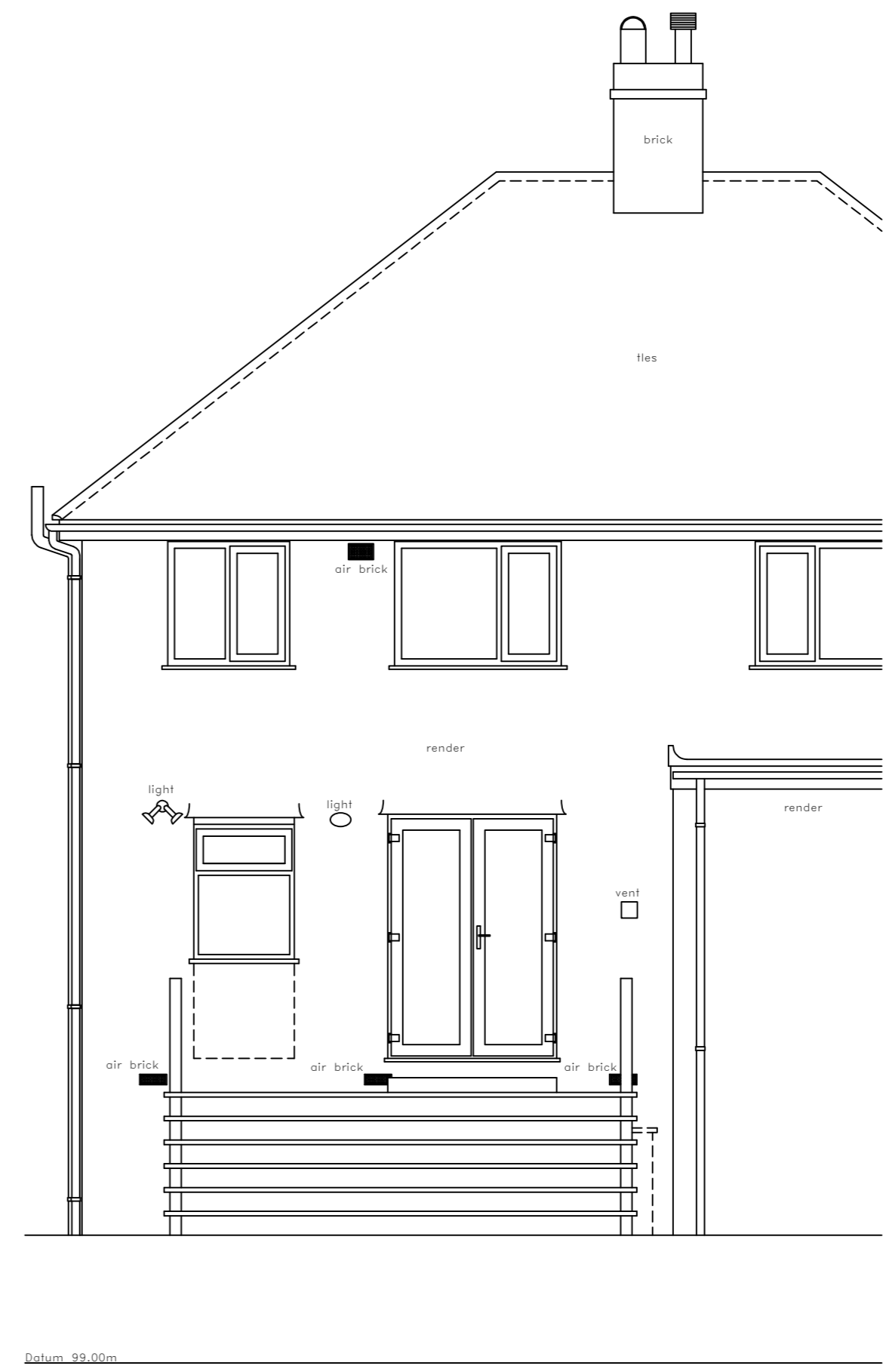
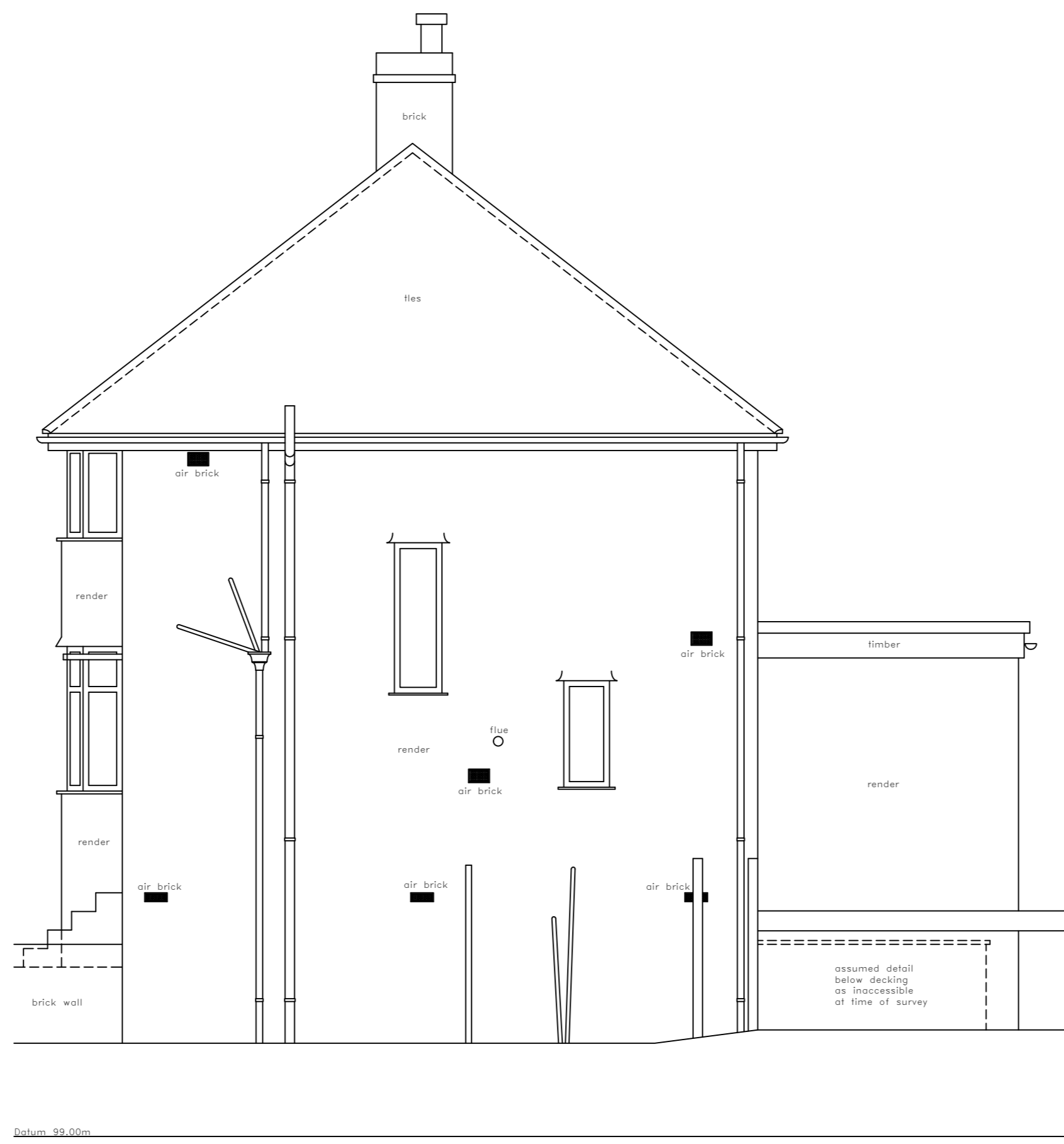
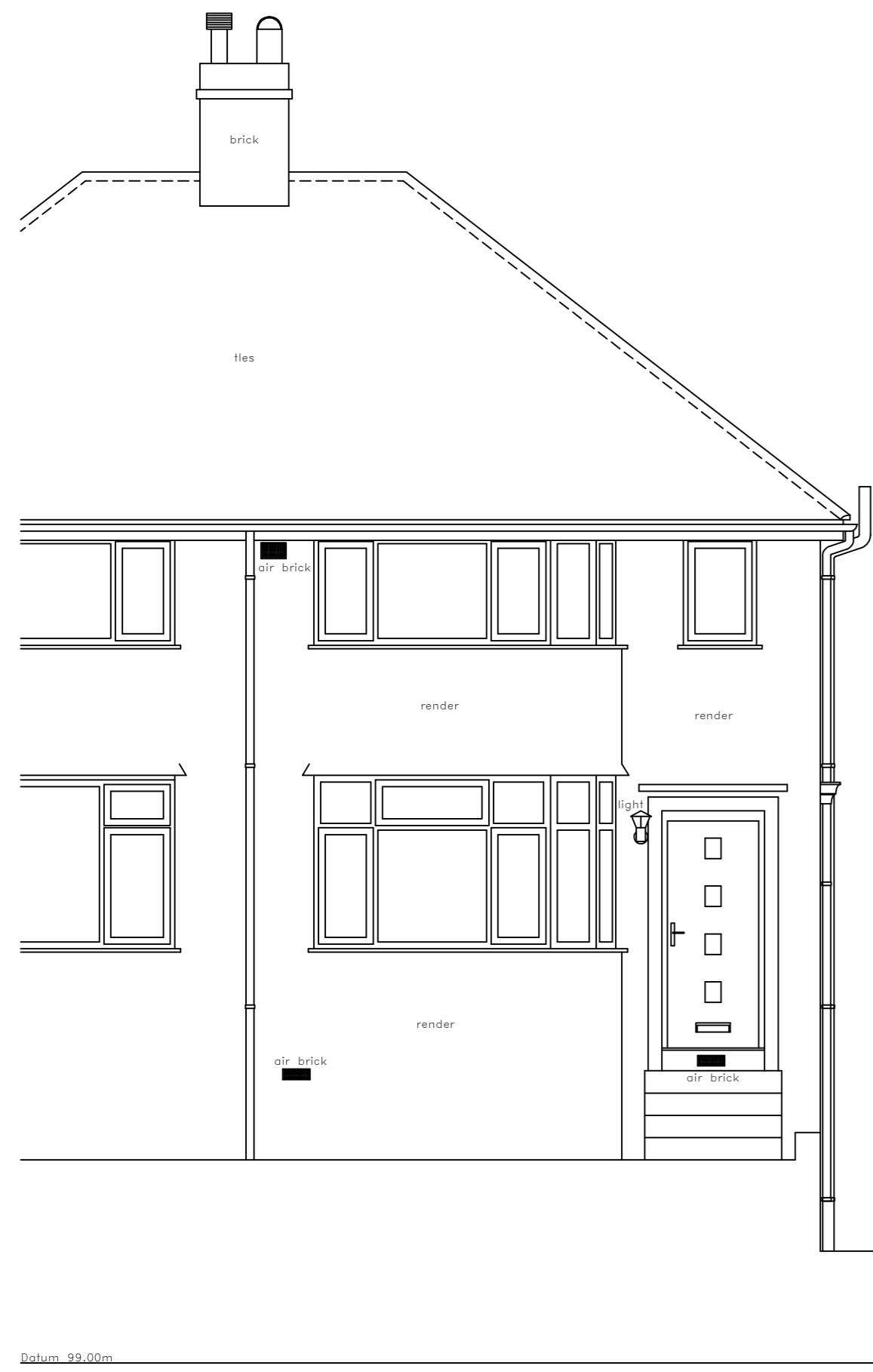
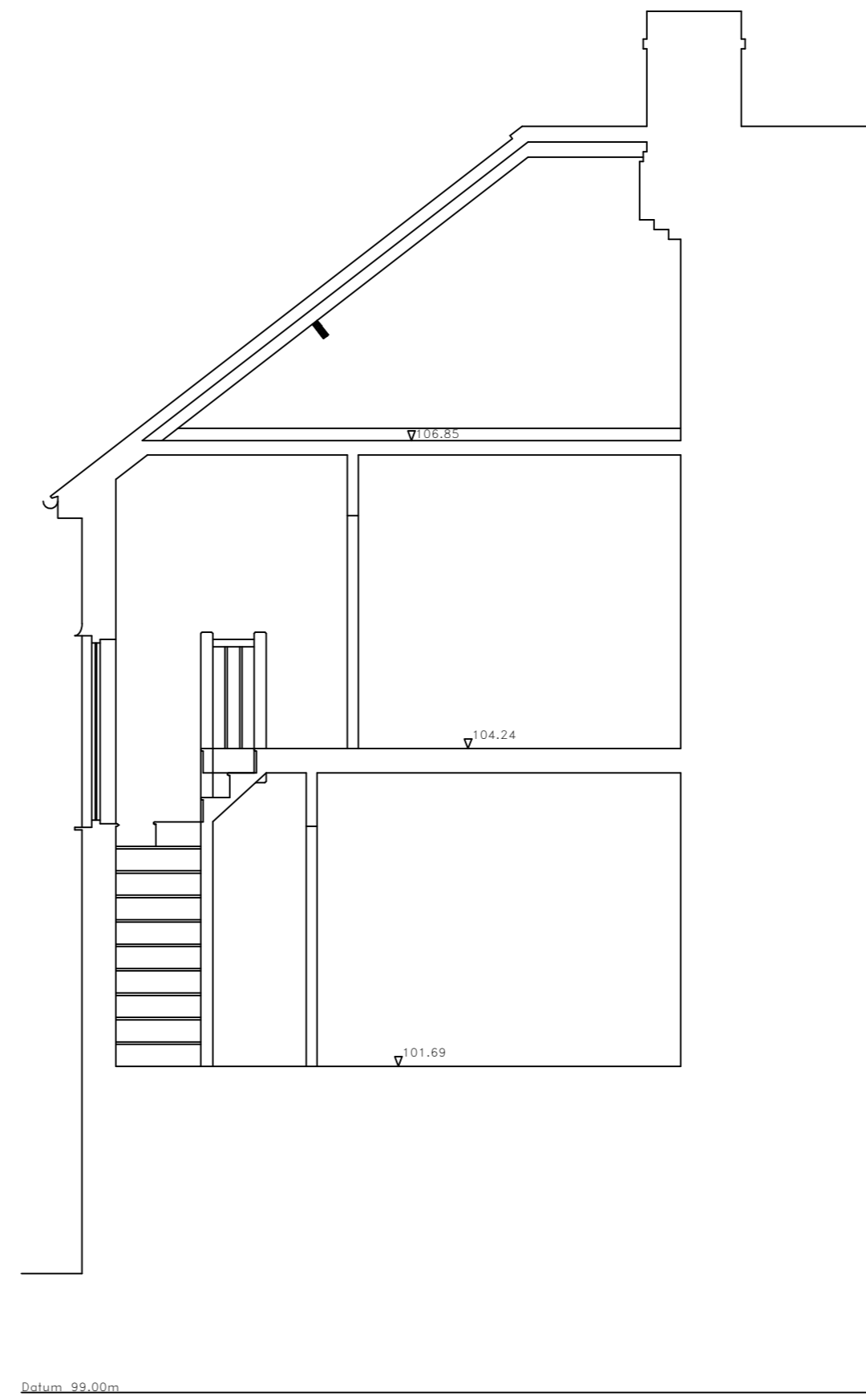
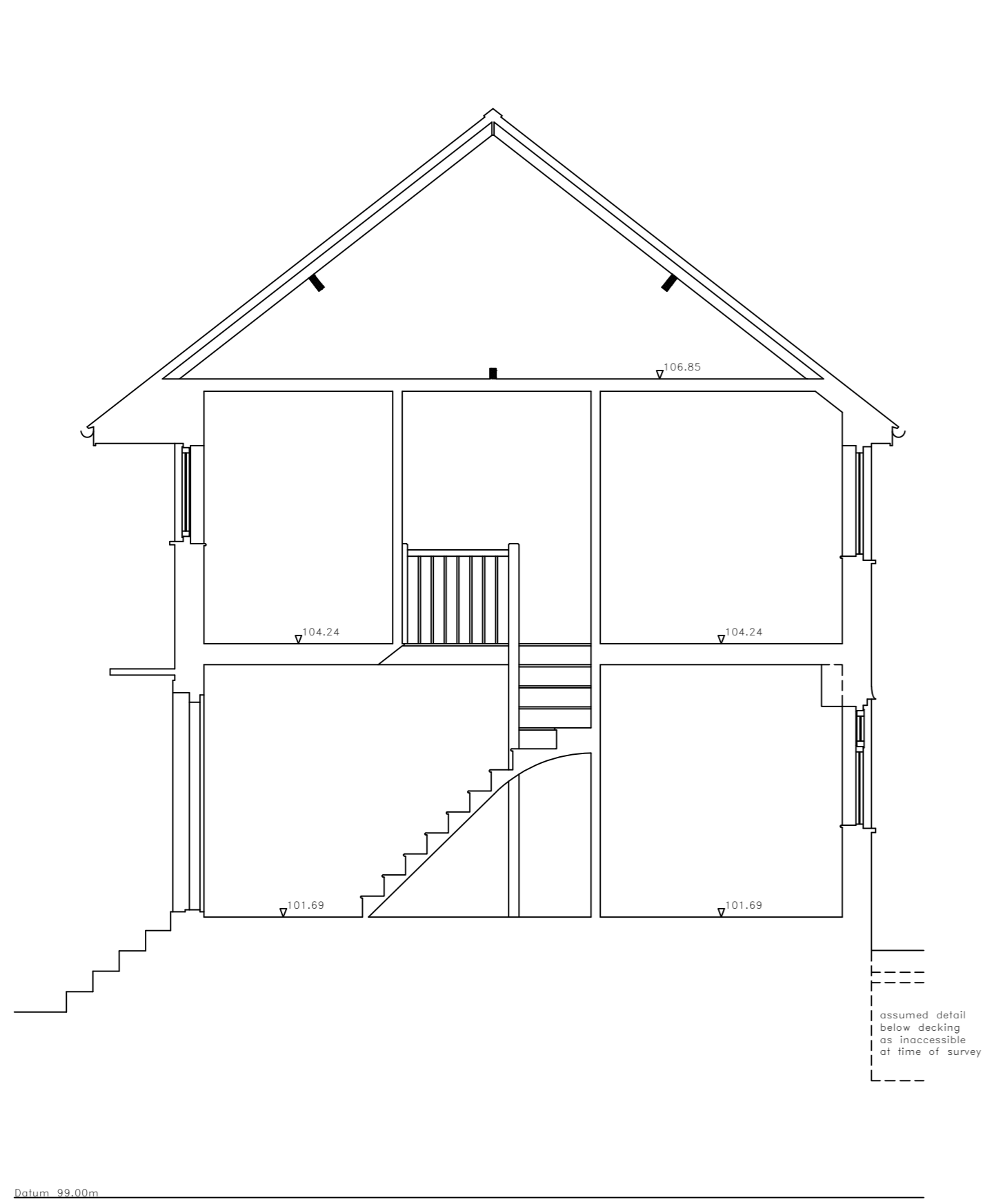
GENERAL NOTES :-
 ALL LEVELS ARE IN METRES RELATED TO AN ASSUMED DATUM LOCATED ON INSPECTION COVER AS SHOWN ON DRAWING 24885/1. (+value 100.00m).
 THIS DRAWING HAS BEEN PRODUCED WITH A PLOT SCALE ACCURACY OF 1:50

BUILDING SURVEY KEY :-

13	room height	hwf	hot water tank
I/B	floor boards	lc	inspection cover
Ø	pipe diameter	li	insert level
a/b	air brick	mb	manhole cover
ab	alarm box	OSBM	ordnance survey bench mark
ah	arch head	q/tiles	quarry tiles
bd	back drop	rad	radiator
bk	brick	ri	roof light
conc	concrete	rw	rope water pipe
cr	cobble riser	sfc	soil filled chamber
cb	fuse box	sh	floor to sill height
dh	door height	sp	arch springing point height
dp	depth	sp	soil pipe
e/mtr	electricity metre	succ	suspended ceiling
elec	electricity	svp	soil vent pipe
f/p	fire place	tz	headed level roll
fh	floor to head height	IBM	temporary bench mark
fl	floor level	tl	threshold level
fs	floor to sill height	top	top of cap
g/mtr	gas metre	top	top of pipe
hd	hose dryer	tot	top of tank
hr	heater	u/c	underside height
		UTL	unable to lift
		wp	water fountain
		wfc	water filled chamber
		wp	waste pipe

SERVICES KEY :-

⊗	strip light	AK	alarm keypad
⊗	light	IC	intercom
⊗	wall light	ACP	alarm control panel
⊗	emergency light	SPK	speaker
⊗	spot light	PROJ	projector
⊗	pull cord	CCTV	closed circuit tv
V	ventrator	S	sensor
SW	switch	NP	network point
LS	light switch	NC	network aerial
LS	fused switch	CA	coaxial aerial
LS	isolator switch	SD	smoke detector
LS	cooker switch	SD	heat detector
LS	fuse	FA	fire alarm siren
LS	blank socket	FG	fire breakglass
LS	single socket	FS	fire sprinkler
LS	double socket	WFE	water fire extinguisher
LS	ceiling socket/fuse/switch	CO2	CO2 fire extinguisher
LS	thermostat	P	powder fire extinguisher
LS	card access point (wipe card)	F	fire extinguisher
LS	emergency door release	FAP	fire alarm control panel



0 0.5 1 2 3 4 5

MIDLAND SURVEY LTD

HEAD OFFICE
 Cromwell House, Westfield Road, Saultham, Warwickshire, CV47 0JH.
 Tel: 01926 810811 Fax: 01926 810812
 E-Mail: mail@midlandsurvey.co.uk
www.midlandsurvey.co.uk

Client: EXAMPLE - FULL BUILDING SURVEY - SEMI DETACHED - OXFORD

Project: _____

Title: SECTIONS AND ELEVATIONS

Date: _____ Revisions: _____

Scale: 1:500A1

Dwg No: /3

Surveyor: _____

Checked: _____

**TOPOGRAPHICAL (LAND) SURVEYORS / UTILITY SURVEYORS
 BUILDING MEASUREMENT SURVEYORS / 3D LASER SCANNING**

HAS **constructionline** **THE SURVEY ASSOCIATION**

Copyright Midland Survey Ltd. Reproduction of this information is prohibited without permission from Midland Survey Ltd.