



# NOTES

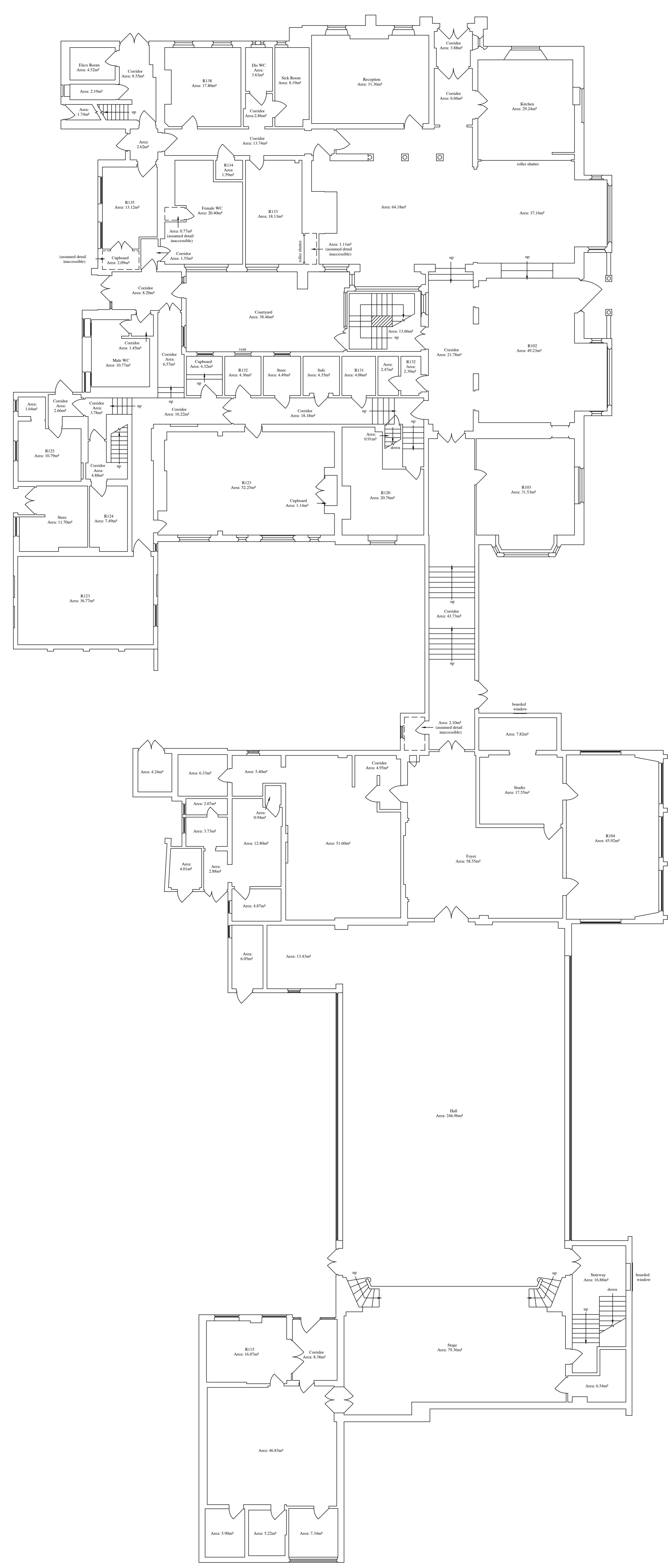
THIS DRAWING HAS BEEN PRODUCED WITH A FLAT SCALE ACCURACY OF 0.100  
THIS DRAWING IS BASIC DETAIL ONLY

**BUILDING SURVEY KEY**

room height	fire alarm
1/2 floor access	fire alarm cover
plan diameter	fire alarm cover
radius	fire alarm cover
width	fire alarm cover
width	fire alarm cover
width	fire alarm cover
width	fire alarm cover
width	fire alarm cover
width	fire alarm cover
width	fire alarm cover
width	fire alarm cover
width	fire alarm cover

**SURVICES KEY**

step light	alarm keypad
light	intercom
wall light	alarm intercom
emergency light	cupboard
spot light	projector
jail vent	closed circuit tv
workbench	vent
switch	entrance point
light switch	entrance panel
land switch	window detector
interior switch	heat detector
outlet switch	fire alarm zone
door	fire burglar
fire alarm zone	fire alarm
fire alarm zone	fire alarm
fire alarm zone	fire alarm
fire alarm zone	fire alarm
fire alarm zone	fire alarm



B1 GROUND FLOOR PLAN  
APPROXIMATE GFA: 1655.95sqf (including courtyard)  
APPROXIMATE TOTAL GFA: 1794.27

**MIDLAND SURVEY LTD**

Company House, Westfield Road, Southern, Warwickshire, CV47 9JH.  
Tel: 01926 810811 Fax: 01926 810812  
E-MAIL: midland@midlandsurvey.co.uk  
www.midlandsurvey.co.uk

Client: \_\_\_\_\_  
Project: \_\_\_\_\_  
Title: B1 BASIC GROUND FLOOR PLAN  
Date: \_\_\_\_\_ Revisions: \_\_\_\_\_  
Scale: 1:1000 ASD  
Dwg. No: \_\_\_\_\_  
Survised: \_\_\_\_\_  
Checked: \_\_\_\_\_

**TOPOGRAPHICAL (LAND) SURVEYORS / UTILITY SURVEYORS  
BUILDING MEASUREMENT SURVEYORS / 3D LASER SCANNING**

# NOTES

## GENERAL NOTES :-

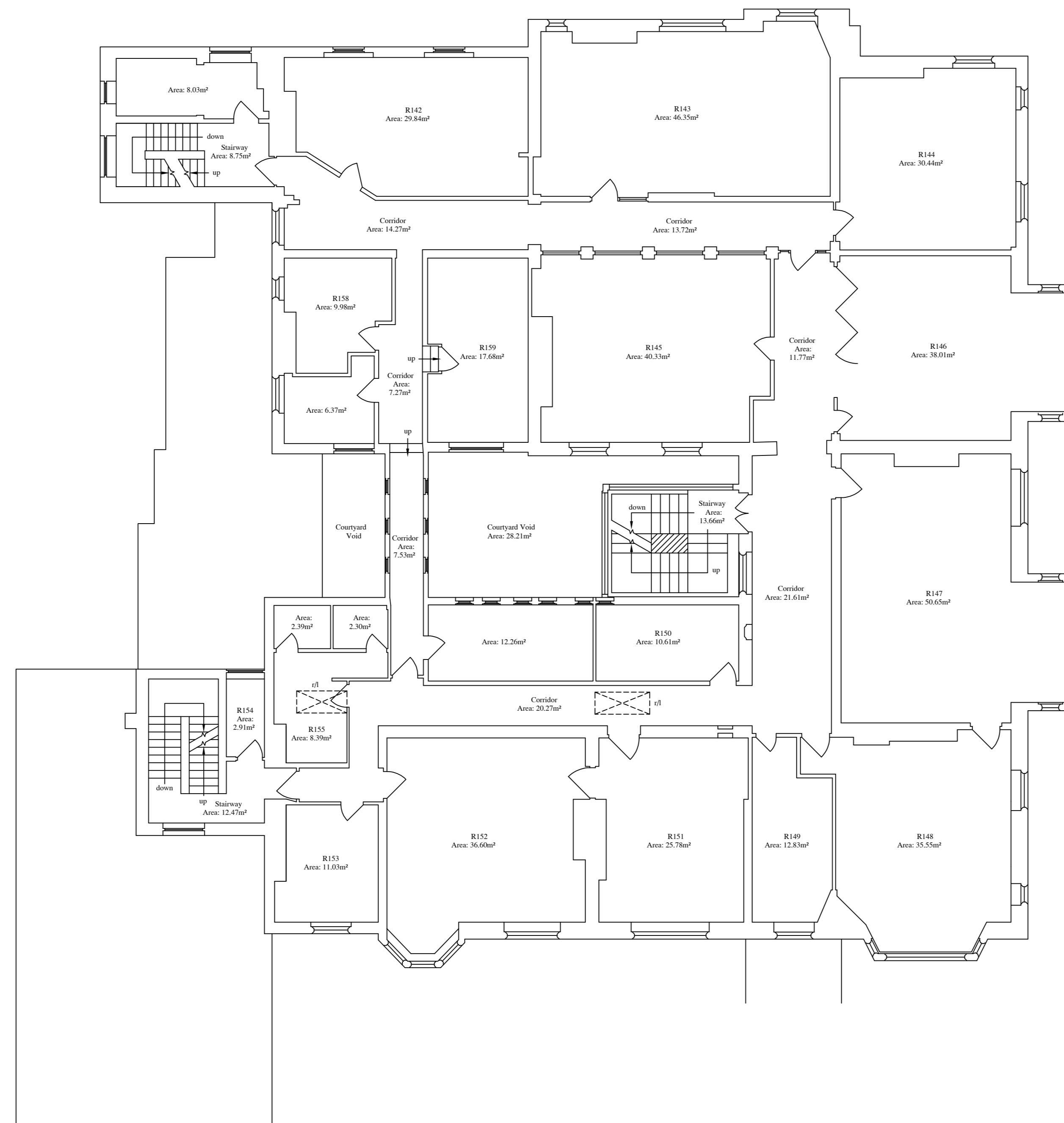
THIS DRAWING HAS BEEN PRODUCED WITH A PLOT SCALE ACCURACY OF 1:100  
THIS DRAWING IS BASIC DETAIL ONLY

## BUILDING SURVEY KEY :-

- |   |   |
|---|---|
| <ul style="list-style-type: none"> <li>∅ - room height</li> <li>f/b - floor boards</li> <li>g - pipe diameter</li> <li>q/b - air brick</li> <li>ab - alarm box</li> <li>oh - arch head height</li> <li>bd - back drop</li> <li>bk - brick</li> <li>conc - concrete</li> <li>or - cottle riser</li> <li>ob - fuse box</li> <li>oh - door height</li> <li>op - depth</li> <li>g/mtr - electricly metre</li> <li>elec - electricly</li> <li>f/p - fire place</li> <li>fh - floor to head height</li> <li>fl - floor level</li> <li>fs - floor to sill height</li> <li>GEA - gross external area</li> <li>GIFA - gross internal floor area</li> <li>g/mtr - gds metre</li> <li>gr - gas riser</li> <li>hd - hand dryer</li> </ul> | <ul style="list-style-type: none"> <li>hw - hot water tank</li> <li>ic - inspection cover</li> <li>im - insert level</li> <li>m/c - manhole cover</li> <li>OSBM - Ordnance survey bench mark</li> <li>q/lines - quarry lines</li> <li>rod - rod</li> <li>rl - roof light</li> <li>rwp - rain water pipe</li> <li>s/c - soil filled chamber</li> <li>sh - floor to sill height</li> <li>sp - arch springing point height</li> <li>sp - soil pipe</li> <li>susc - suspended ceiling</li> <li>svp - soil vent pipe</li> <li>h.zoil - heeded level roll</li> <li>TBM - temporary bench mark</li> <li>H - threshold level</li> <li>loc - top of cap</li> <li>top - top of pipe</li> <li>tot - top of tank</li> <li>u/s - underside height</li> <li>u/l - unable to lift</li> <li>vp - vent pipe</li> <li>wf - water fountain</li> <li>w/c - water filled chamber</li> <li>wp - waste pipe</li> </ul> |
|---|---|

## SERVICES KEY :-

- |  |  |
|--|--|
| <ul style="list-style-type: none"> <li>⊗ - strip light</li> <li>⊗ - light</li> <li>⊗ - wall light</li> <li>⊗ - emergency light</li> <li>• - spot light</li> <li>○ - pull cord</li> <li>⊏ - vent/extractor</li> <li>⊏ - switch</li> <li>⊏ - light switch</li> <li>⊏ - fused switch</li> <li>⊏ - isolator switch</li> <li>⊏ - cooker switch</li> <li>⊏ - fuse</li> <li>⊏ - blank socket</li> <li>⊏ - single socket</li> <li>⊏ - double socket</li> <li>⊏ - ceiling socket/fuse/switch</li> <li>⊏ - thermostat</li> <li>⊏ - card access point (swipe card)</li> <li>⊏ - emergency door release</li> </ul> | <ul style="list-style-type: none"> <li>⊏ - alarm keypad</li> <li>⊏ - intercom</li> <li>⊏ - alarm control panel</li> <li>⊏ - speaker</li> <li>⊏ - projector</li> <li>⊏ - closed circuit tv</li> <li>⊏ - sensor</li> <li>⊏ - network point</li> <li>⊏ - coaxial aerial</li> <li>⊏ - smoke detector</li> <li>⊏ - heat detector</li> <li>⊏ - fire alarm siren</li> <li>⊏ - fire breakglass</li> <li>⊏ - fire sprinkler</li> <li>⊏ - fire blanket</li> <li>⊏ - water fire extinguisher</li> <li>⊏ - co2 fire extinguisher</li> <li>⊏ - powder fire extinguisher</li> <li>⊏ - fire extinguisher</li> <li>⊏ - fire alarm control panel</li> </ul> |
|--|--|



### R1 FIRST FLOOR PLAN

APPROXIMATE GEA: 689.52m² (excluding courtyard void)  
APPROXIMATE TOTAL GIFA: 569.67m²



## MIDLAND SURVEY LTD

HEAD OFFICE  
Cromwell House, Westfield Road, Southam, Warwickshire, CV47 0JH.  
Tel: 01926 810811 Fax: 01926 810812  
E-Mail: mail@midlandsurvey.co.uk  
www.midlandsurvey.co.uk

Client	
Project	
Title	R1 BASIC FIRST FLOOR PLAN
Date	
Scale	1:100(BA1)
Dwg No	
Surveyor	
Checked	
Revisions	

TOPOGRAPHICAL (LAND) SURVEYORS / UTILITY SURVEYORS  
BUILDING MEASUREMENT SURVEYORS / 3D LASER SCANNING



**NOTES**

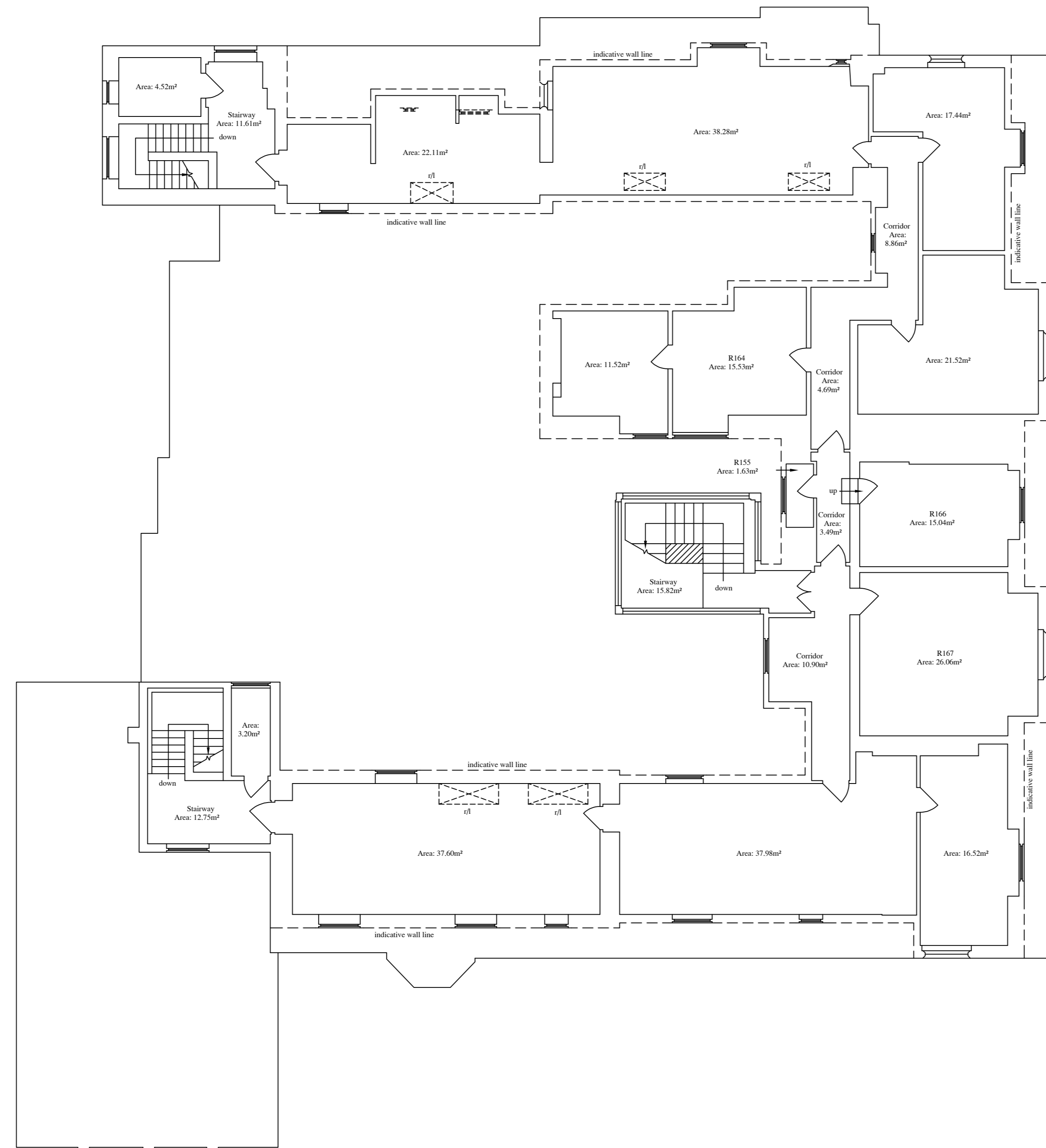
GENERAL NOTES :-  
 THIS DRAWING HAS BEEN PRODUCED WITH A PLOT SCALE ACCURACY OF 1:100  
 THIS DRAWING IS BASIC DETAIL ONLY

BUILDING SURVEY KEY :-

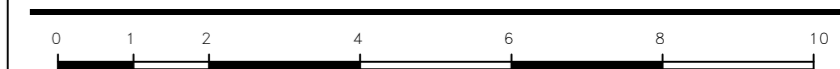
⊙	room height	hw	hot water tank
⊖	floor boards	lc	inspection cover
⊕	pipe diameter	ll	lintel level
q/b	air brick	mh	manhole cover
ab	alarm box	OSBM	odometric survey bench mark
oh	arch head height	q/lines	quarry tiles
bd	back drop	rad	radiator
bk	brick	rl	roof light
conc	concrete	rw	rain water pipe
cr	cobble riser	sfc	soil filled chamber
fb	fuse box	sh	floor to sill height
dh	door height	sp	arch springing point height
dp	depth	sp	soil pipe
g/mtr	electrically metre	susc	suspended ceiling
elec	electricity	svp	soil vent pipe
f/p	fire place	h.rail	headed level rail
fh	floor to head height	TBM	temporary bench mark
fl	floor level	H	threshold level
fs	floor to sill height	loc	top of cap
GEA	gross external area	top	top of pipe
GIFA	gross internal floor area	tot	top of tank
g/mtr	gas metre	u/s	underside height
gr	gas riser	un	unable to lift
hd	hand dryer	wf	water fountain
		wfc	water filled chamber
		wp	waste pipe

SERVICES KEY :-

⊗	strip light	AK	alarm keypad
⊙	light	IC	intercom
⊗	wall light	ACP	alarm control panel
⊗	emergency light	SPK	speaker
⊙	spot light	PROJ	projector
⊙	pull cord	CCTV	closed circuit tv
⊙	vent/extractor	S	sensor
⊙	switch	NC	network point
⊙	light switch	CS	coaxial serial
⊙	fused switch	SD	smoke detector
⊙	isolator switch	HD	heat detector
⊙	cooker switch	FA	fire alarm siren
⊙	fuse	FB	fire breakglass
⊙	blank socket	FS	fire sprinkler
⊙	single socket	BT	fire blanket
⊙	double socket	WFE	water fire extinguisher
⊙	ceiling socket/fuse/switch	CFE	co2 fire extinguisher
⊙	thermostat	PE	powder fire extinguisher
⊙	card access point (swipe card)	EX	fire extinguisher
⊙	emergency door release	FAP	fire alarm control panel



**R1 SECOND FLOOR PLAN**  
 APPROXIMATE GEA: 430.41m²  
 APPROXIMATE TOTAL GIFA: 337.08m²



**MIDLAND SURVEY LTD**

HEAD OFFICE  
 Cromwell House, Westfield Road, Southam, Warwickshire, CV47 0JH.  
 Tel: 01926 810811 Fax: 01926 810812  
 E-Mail: mail@midlandsurvey.co.uk  
 www.midlandsurvey.co.uk

Client: \_\_\_\_\_  
 Project: \_\_\_\_\_  
 Title: R1 BASIC SECOND FLOOR PLAN  
 Date: \_\_\_\_\_ Revisions: \_\_\_\_\_  
 Scale: 1:100@A1  
 Dwg No: \_\_\_\_\_  
 Surveyor: \_\_\_\_\_  
 Checked: \_\_\_\_\_

TOPOGRAPHICAL (LAND) SURVEYORS / UTILITY SURVEYORS  
 BUILDING MEASUREMENT SURVEYORS / 3D LASER SCANNING



Copyright Midland Survey Ltd. Reproduction of this document is prohibited without permission from Midland Survey Ltd.